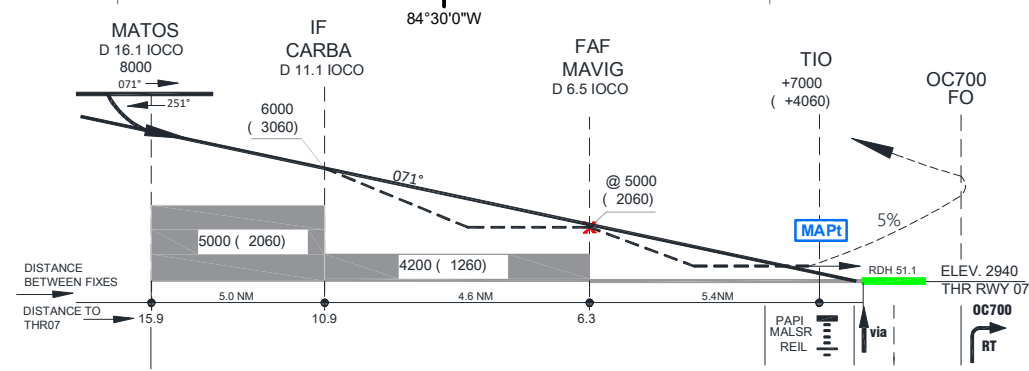
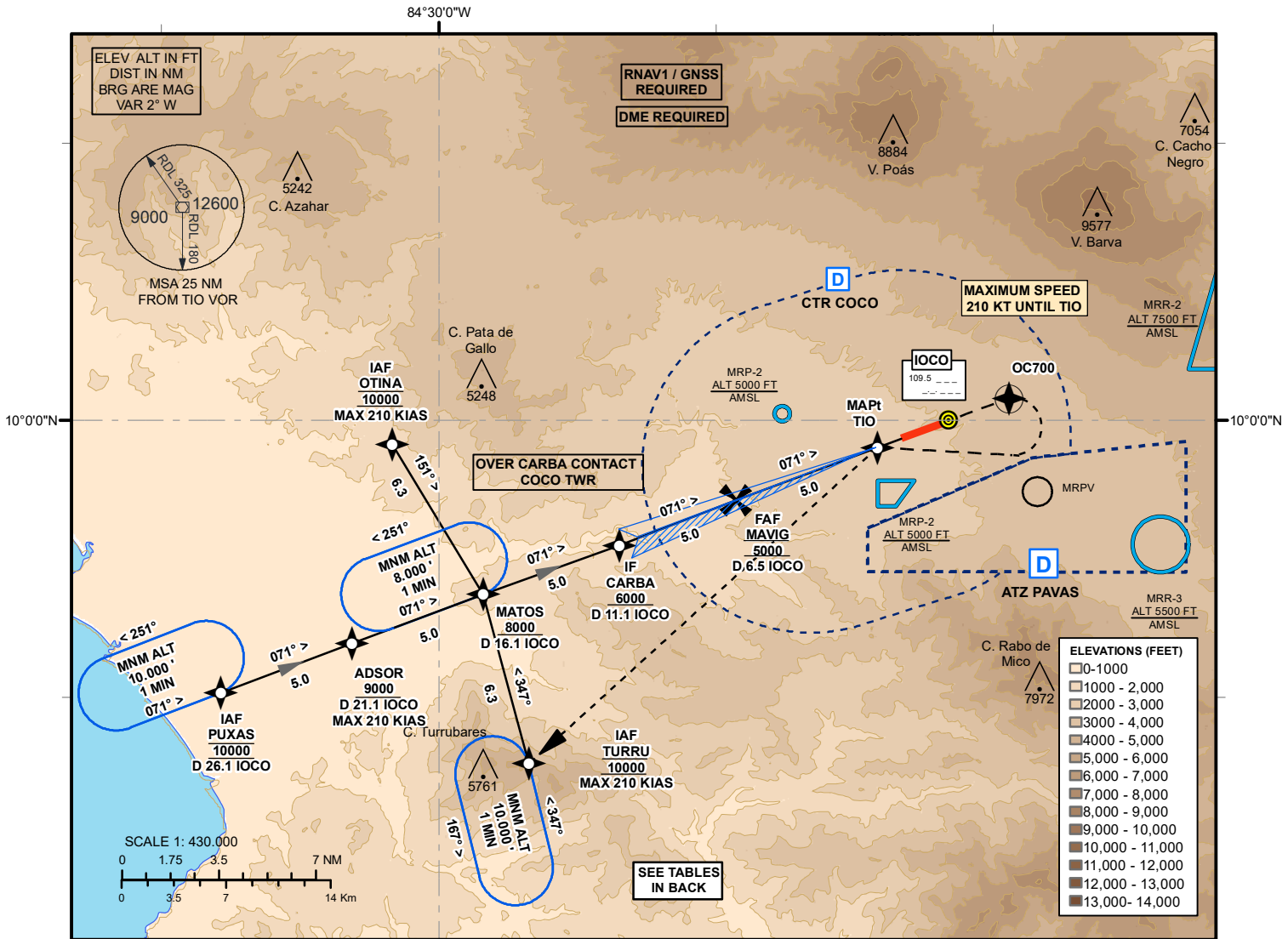


**CARTA APROXIMACIÓN
POR INSTRUMENTOS /
INSTRUMENT APPROACH
CHART**

**ALAJUELA, Intl (MROC)
LOC Z RWY 07**

AD. ELEV 3048 ft
THR RWY 07 ELEV 2940 ft
T.A. 19.000 ft

COCO ACC (R) 119.6
COCO APP (R) 120.5
COCO TWR 118.6



MISSED APPROACH:
FLY DIRECT TO OC700, TURN RIGHT TO TIO VOR AND CROSS IT AT 7000' OR ABOVE. THEN FLY TO TURRU. CLIMB TO 10000' AND HOLD AS PUBLISHED.

FOR OBSTACLES CLEARANCE:
RATE OF CLIMB 300 FT/NM,
MAX SPEED 210KT
BANK ANGLE 25°

RWY 07 STRAIGHT IN APPROACH	CAT	A	B	C	D	CIRCLING		
		OCA/H 3250 (310)					N/A	
Ground Speed	KT	70	90	100	120	140	160	180
VSP 5,2% (3°)	FT/MIN	372	478	531	637	743	849	955
FAP to THR07 6.3NM	MIN:SEG	05:24	04:12	03:46	03:08	02:42	02:21	02:05